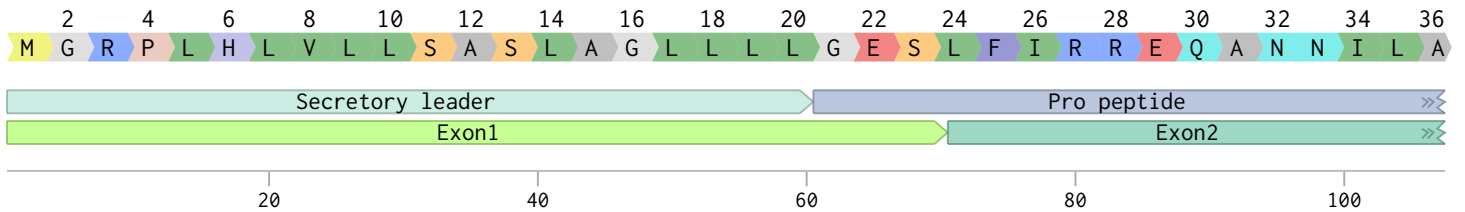
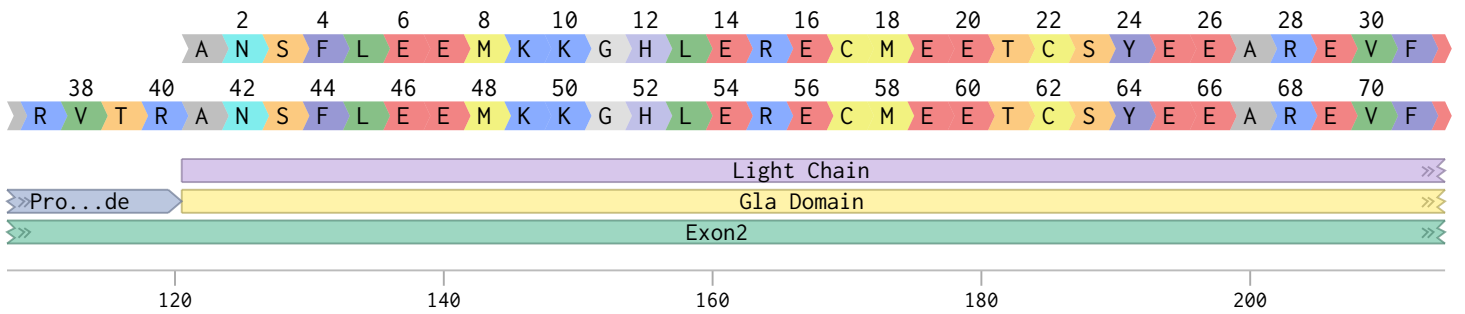


# NM\_000504.4 (1467 bp)

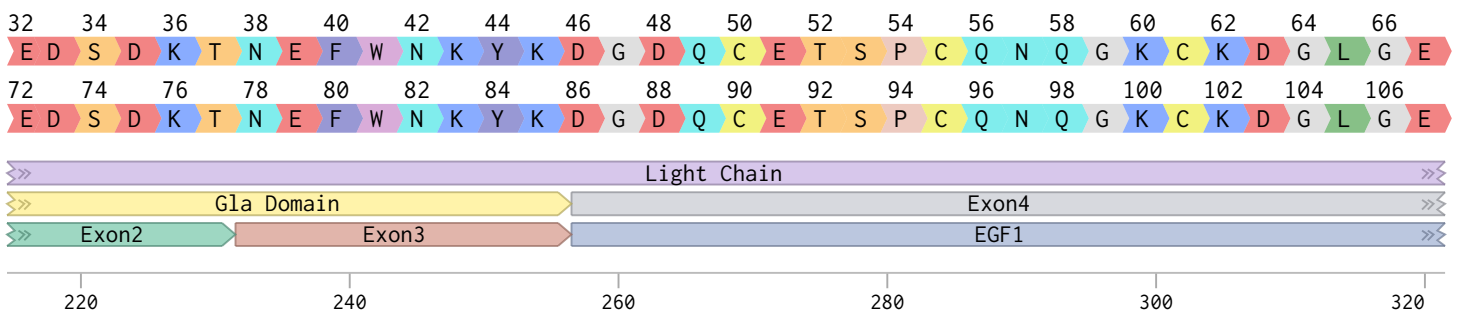
ATGGGGCGCCCACTGCACCTCGTCTGCTCAGTGCCTCCCTGGCTGGCCTCCTGCTGCTCGGGGAAAGTCTGTTTCATCCGAGGGAGCAGGCCAACACATCCTGGC  
TACCCCGCGGTGACGTGGAGCAGGACGAGTACGAGGGACCGACCGAGGACGACGAGCCCTTTCAGACAAGTAGCGTCCCTCGTCCGGTTGTTGTAGACCG



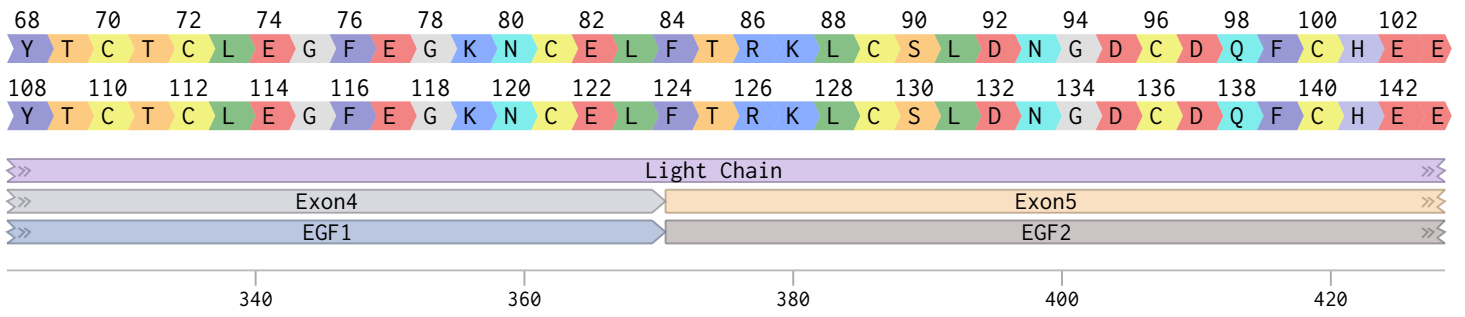
GAGGGTCACGAGGGCAATTCCTTTCTTGAAGAGATGAAGAAAGACACCTCGAAAGAGAGTGCATGGAAGAGACCTGCTCATACGAAGAGGCCCGGAGGTCTTTG  
CTCCCACTGCTCCCGTTAAGGAAAGAACTTCTCTACTTCTTCTGTTGGAGCTTCTCTCACGTACCTTCTCTGGACGAGTATGCTTCTCCGGGCGTCCAGAAAC

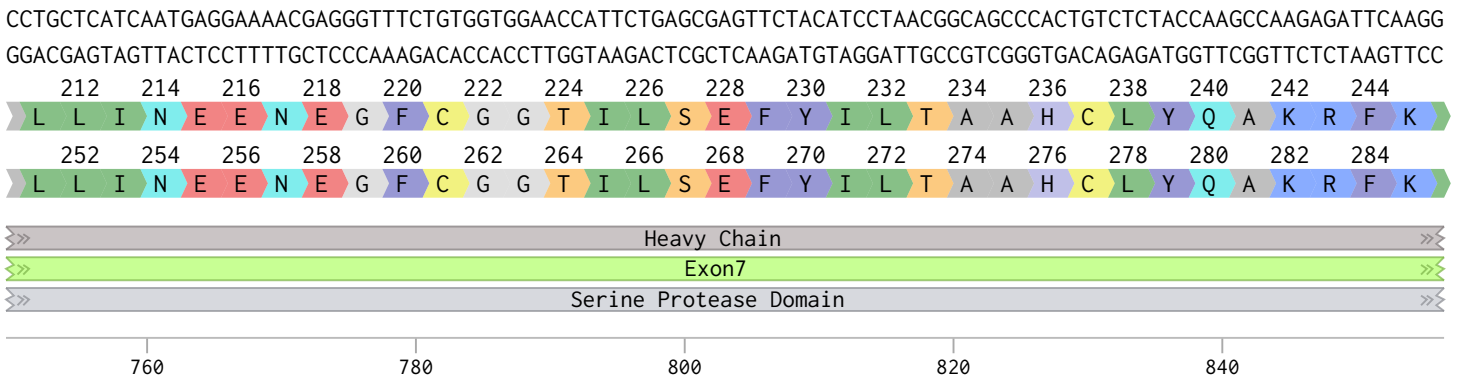
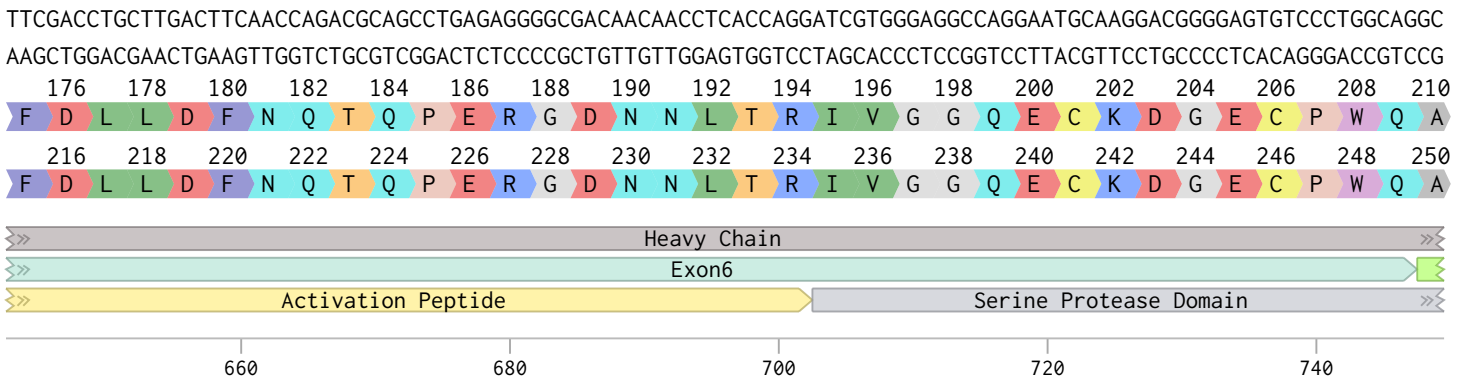
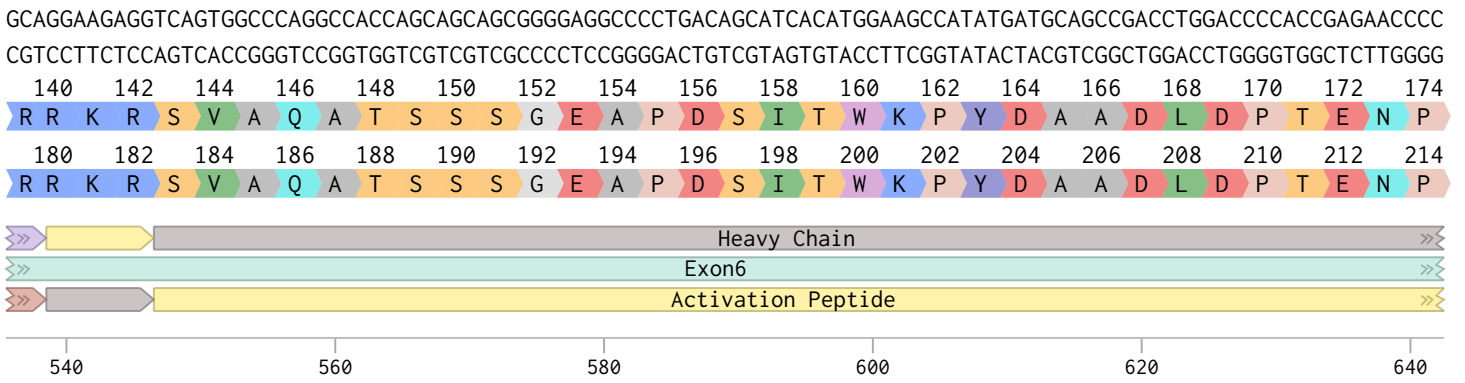
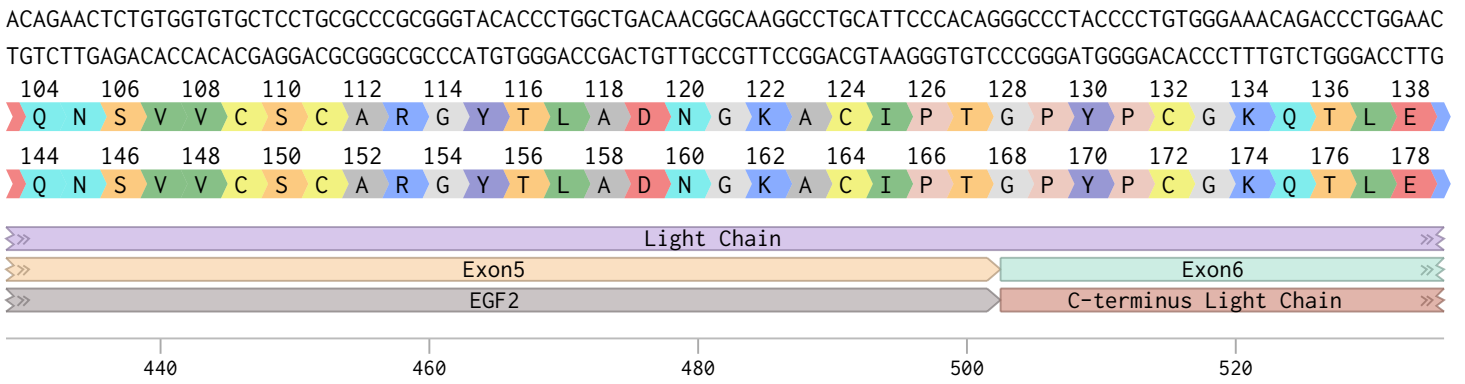


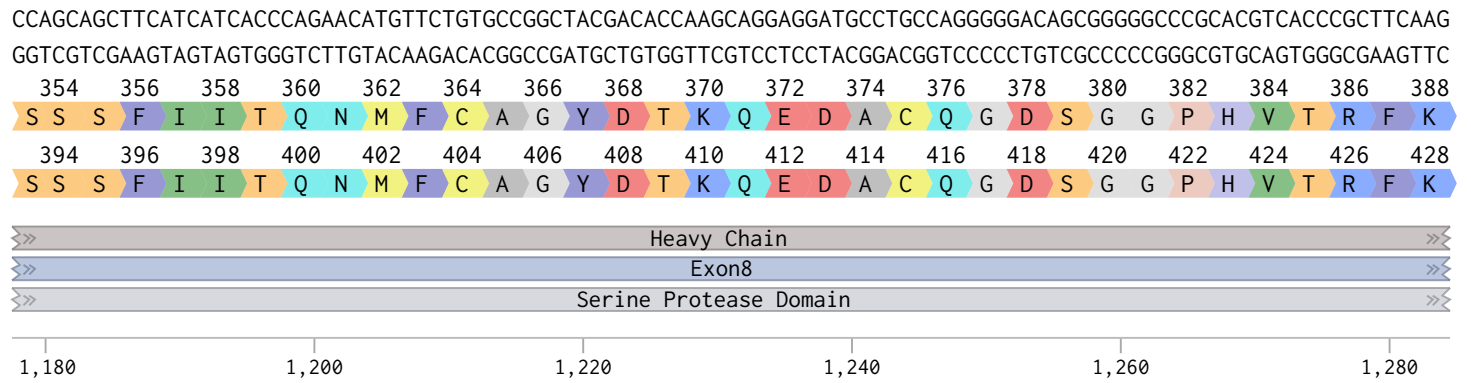
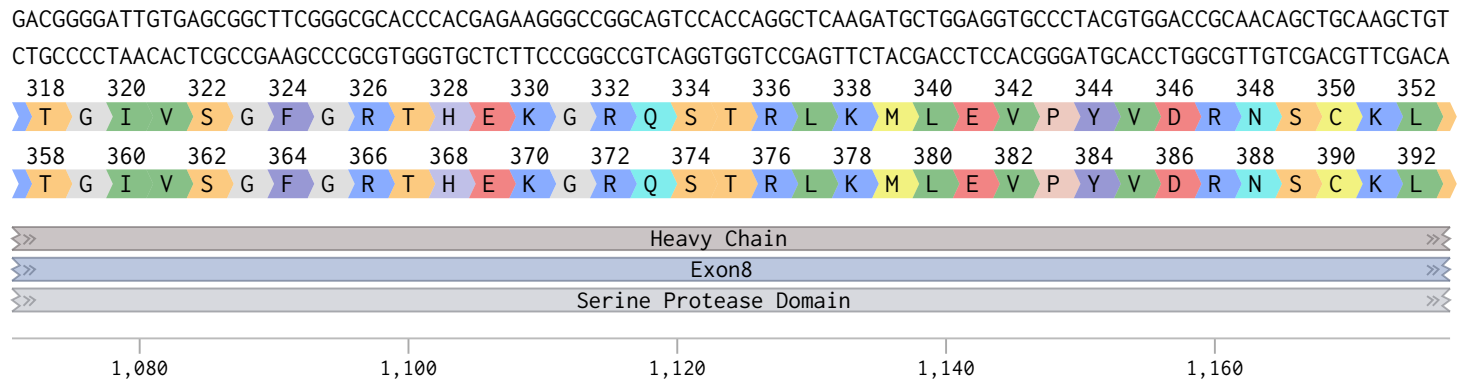
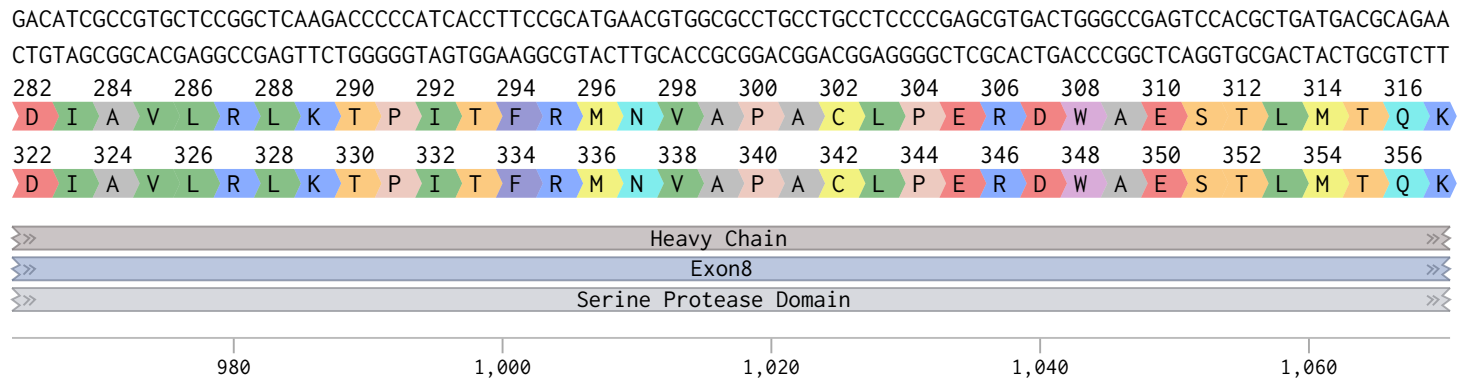
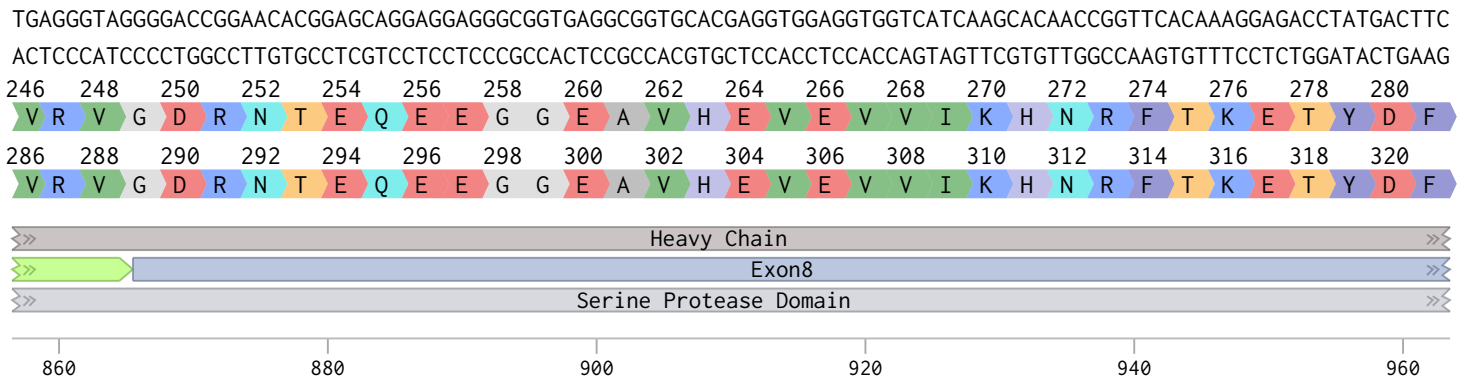
AGGACAGCGACAAGACGAATGAATTCTGGAATAAATACAAAGATGGCGACCAGTGTGAGACCAGTCTTCCAGAACCAGGGCAAATGTAAGACGGCCTCGGGAA  
TCCTGTCGTTCTGCTTACTTAAGACCTTATTTATGTTTCTACCGCTGGTCACACTCTGGTCAGGAACGGTCTTGGTCCCGTTTACATTTCTGCCGAGCCCTT



TACACCTGCACCTGTTTAGAAGATTGGAAGGCAAAAAGTGAATTATTCACACGGAAGCTCTGCAGCCTGGACAACGGGGACTGTGACCAGTTCTGCCACGAGGA  
ATGTGGACGTGGACAAATCTTCTTAAGCTTCCGTTTTGACACTTAATAAGTGTGCCTTCGAGACGTCGGACCTGTTGCCCTGACACTGGTCAAGACGGTGTCTCT

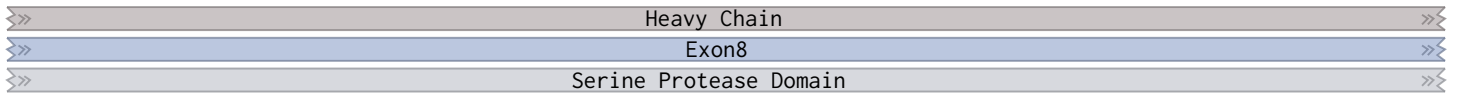






GACACCTACTTCGTGACAGGCATCGTCAGCTGGGGAGAGGGCTGTGCCGTAAGGGGAAGTACGGGATCTACACCAAGGTCACCGCCTTCCTCAAGTGGATCGACAG  
 CTGTGGATGAAGCACTGTCCGTAGCAGTCGACCCCTCTCCCGACACGGGCATTCCCCTTCATGCCCTAGATGTGGTTCCAGTGGCGGAAGGAGTTCACCTAGCTGTC

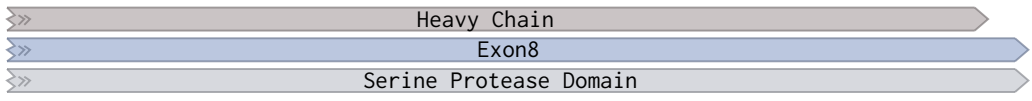
390 392 394 396 398 400 402 404 406 408 410 412 414 416 418 420 422 424  
 D T Y F V T G I V S W G E G C A R K G K Y G I Y T K V T A F L K W I D R  
 430 432 434 436 438 440 442 444 446 448 450 452 454 456 458 460 462 464  
 D T Y F V T G I V S W G E G C A R K G K Y G I Y T K V T A F L K W I D R



1,300 1,320 1,340 1,360 1,380

GTCCATGAAAACCAGGGGCTTGCCCAAGGCCAAGAGCCATGCCCGGAGGTCATAACGTCCTCTCCATTAAAGTGA  
 CAGGTACTTTTGGTCCCGAACGGGTTCCGGTTCGCTACGGGGCTCCAGTATTGCAGGAGAGGTAATTTCACT

426 428 430 432 434 436 438 440 442 444 446 448  
 S M K T R G L P K A K S H A P E V I T S S P L K \*  
 466 468 470 472 474 476 478 480 482 484 486 488  
 S M K T R G L P K A K S H A P E V I T S S P L K \*



1,400 1,410 1,420 1,430 1,440 1,450 1,460